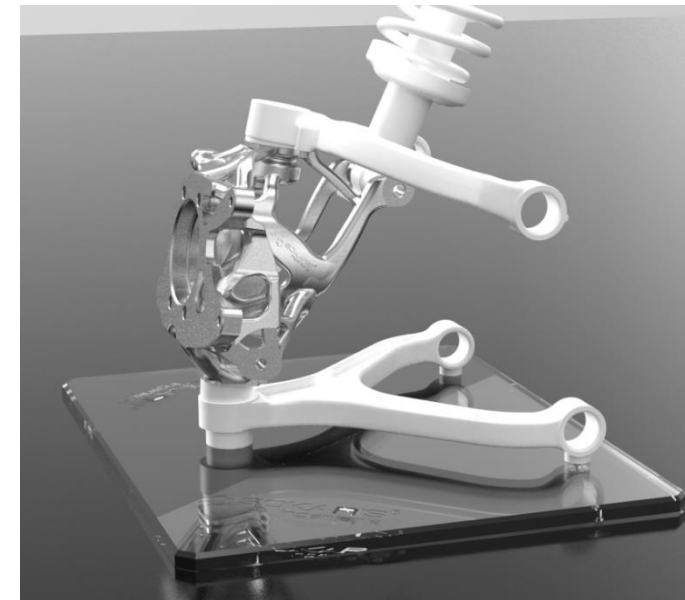
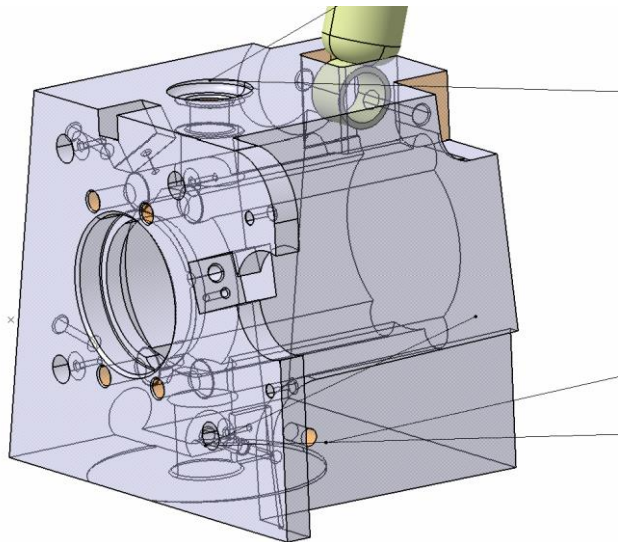
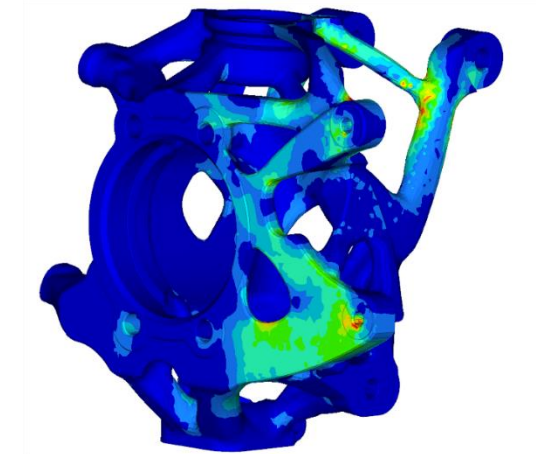
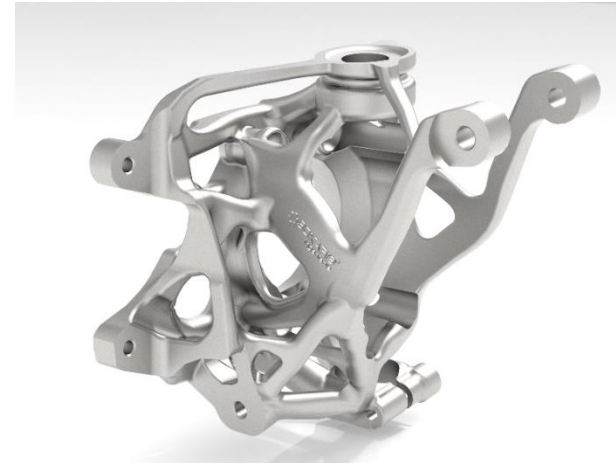
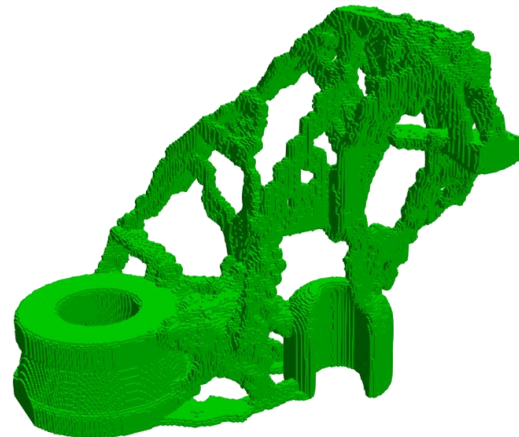
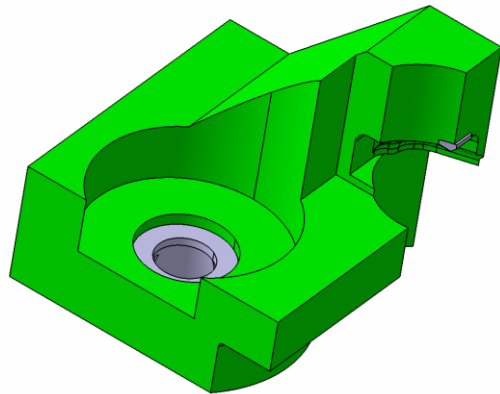
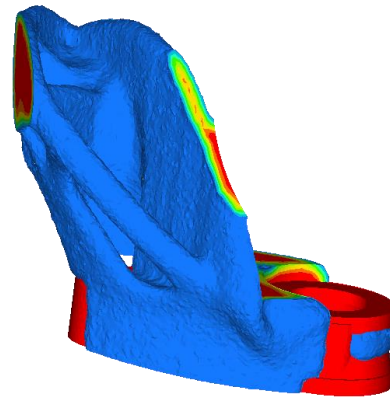


- ⚙️ Process: Additive manufacturing - metal
- ⚙️ Material: aluminium
- ⚙️ Advantages of the methodology:
 - Disruptive technology
 - Mass reduction
- ⚙️ Mechanical aspect:
 - Static criteria



- ❁ Process: To be determined
- ❁ Material: steel
- ❁ Advantage of the methodology:
The design is adapted to the process
- ❁ Mechanical conditions:
Static criteria
Modal analysis

DIE CASTING



ADDITIVE MANUFACTURING