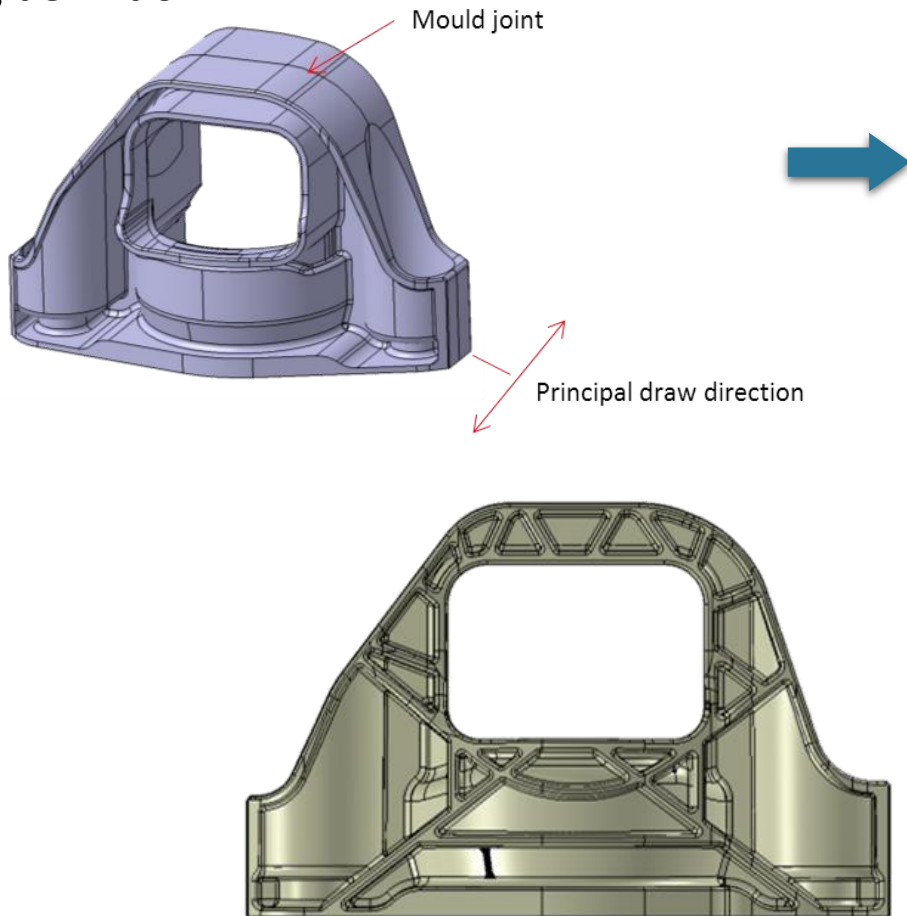


- Process: Thermoplastic injection
- Material: PA66 GF 50
- Optimization:
  - A topological one → isotropic environment
  - A parametric one → anisotropic environment
- Criteria:
  - Mechanical stress
- Challenge:
  - Mass reduction



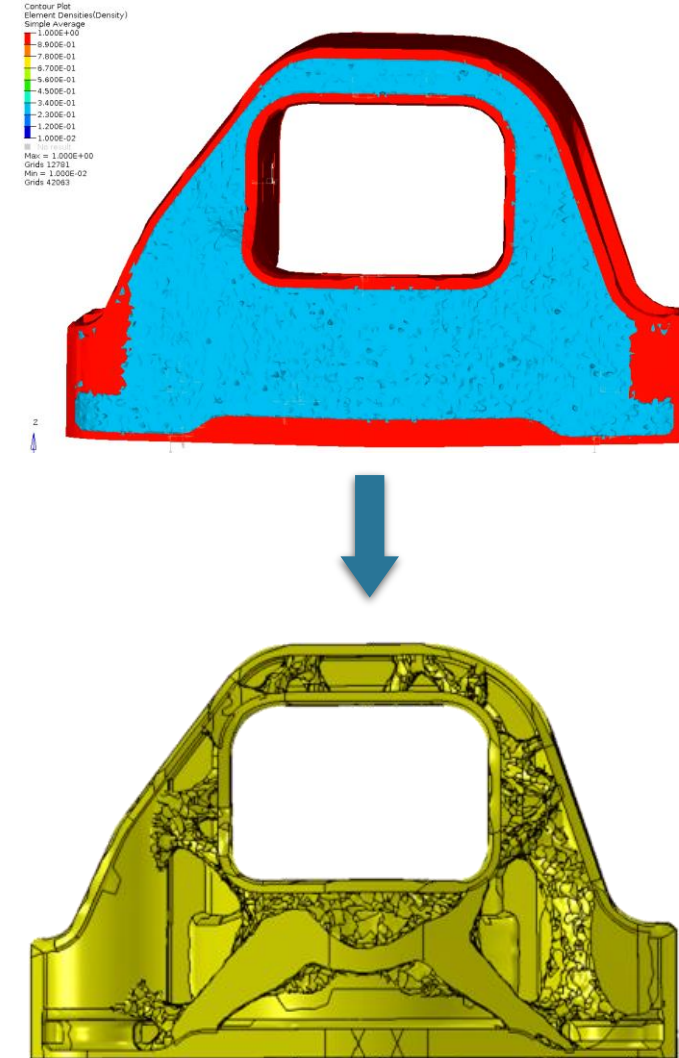
- Topological optimization – isotropic environment

1. Molding definition



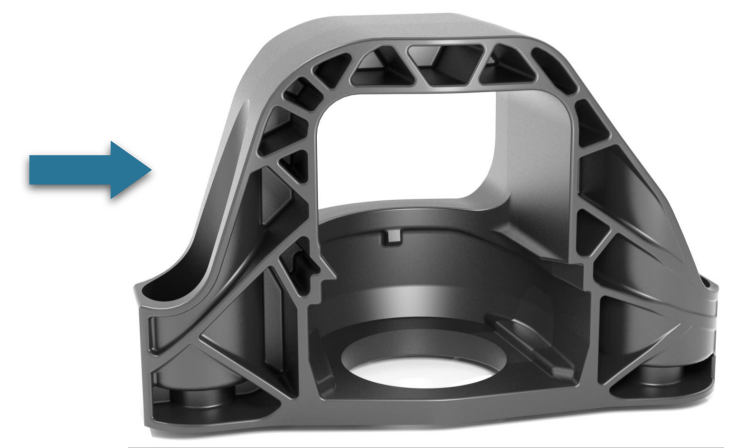
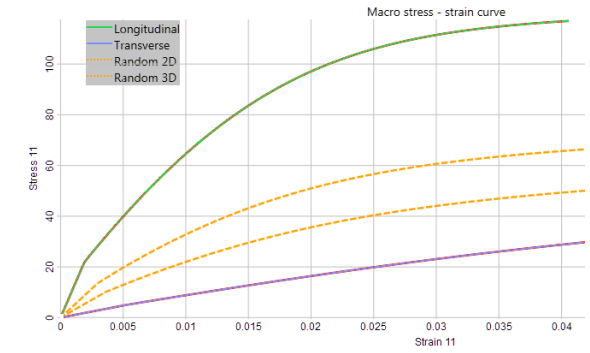
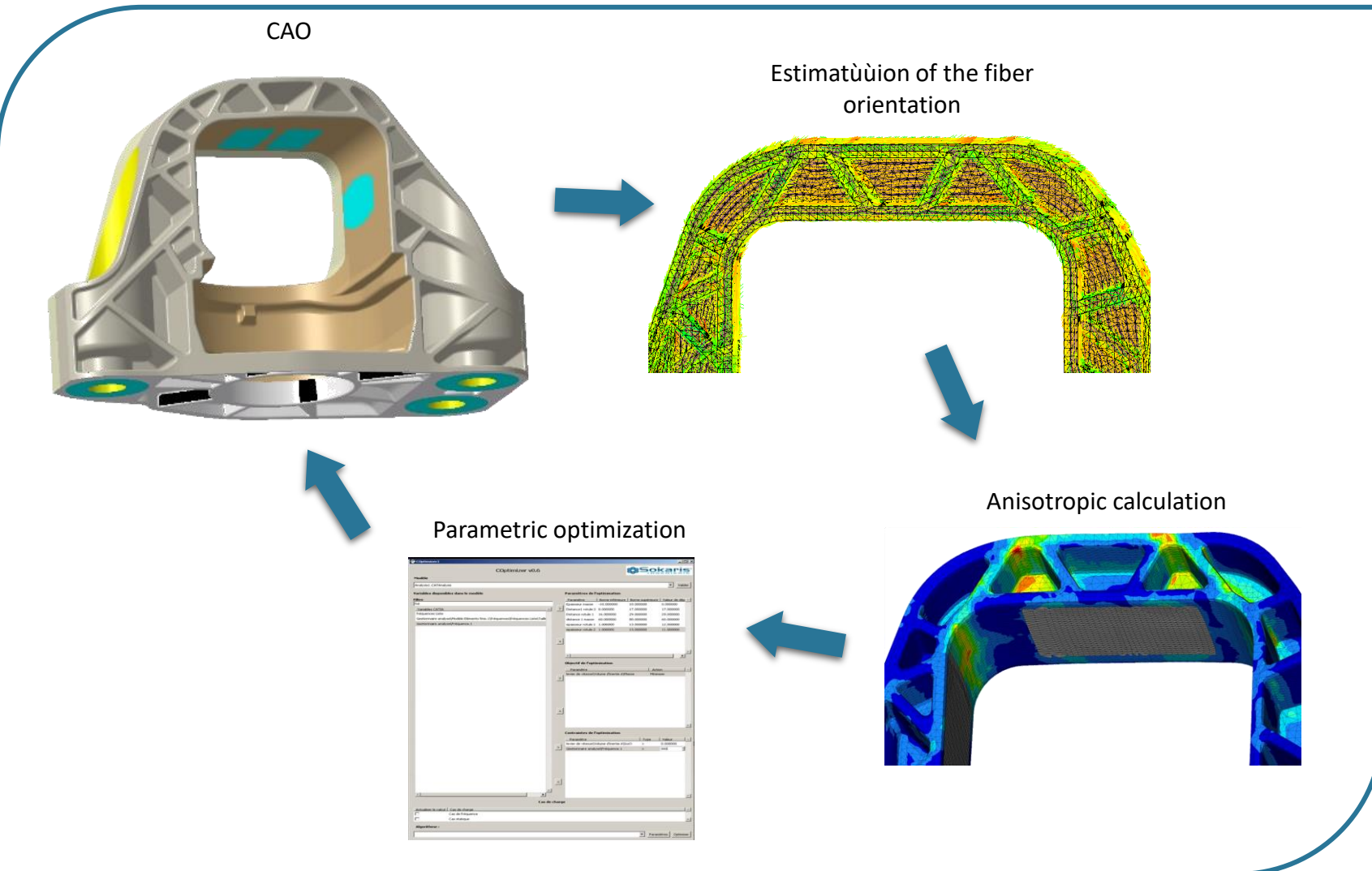
4. Interpretation of results

2. Topological optimization – isotropic environment



3. Analysis

- Parametric optimization – anisotropic environment



- Process: Thermoplastic injection
- Optimization:
  - A topological one → isotropic environment
  - A parametric one → anisotropic environment
- Criterias:
  - Dynamic behavior
  - Optimization of the dynamic stiffness

